



---

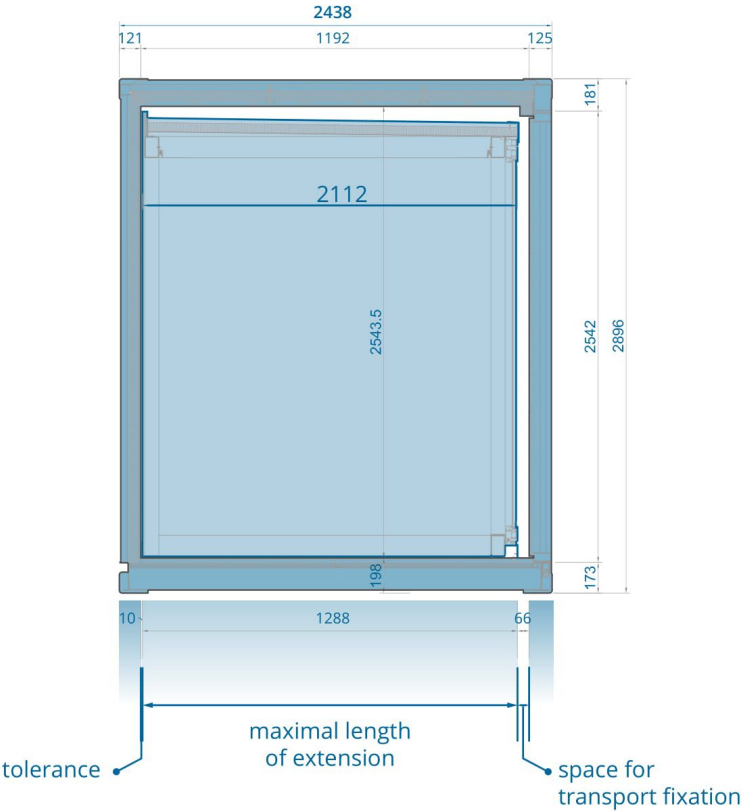
THE ENGINEERS  
ARCHITECTURAL REVOLUTON

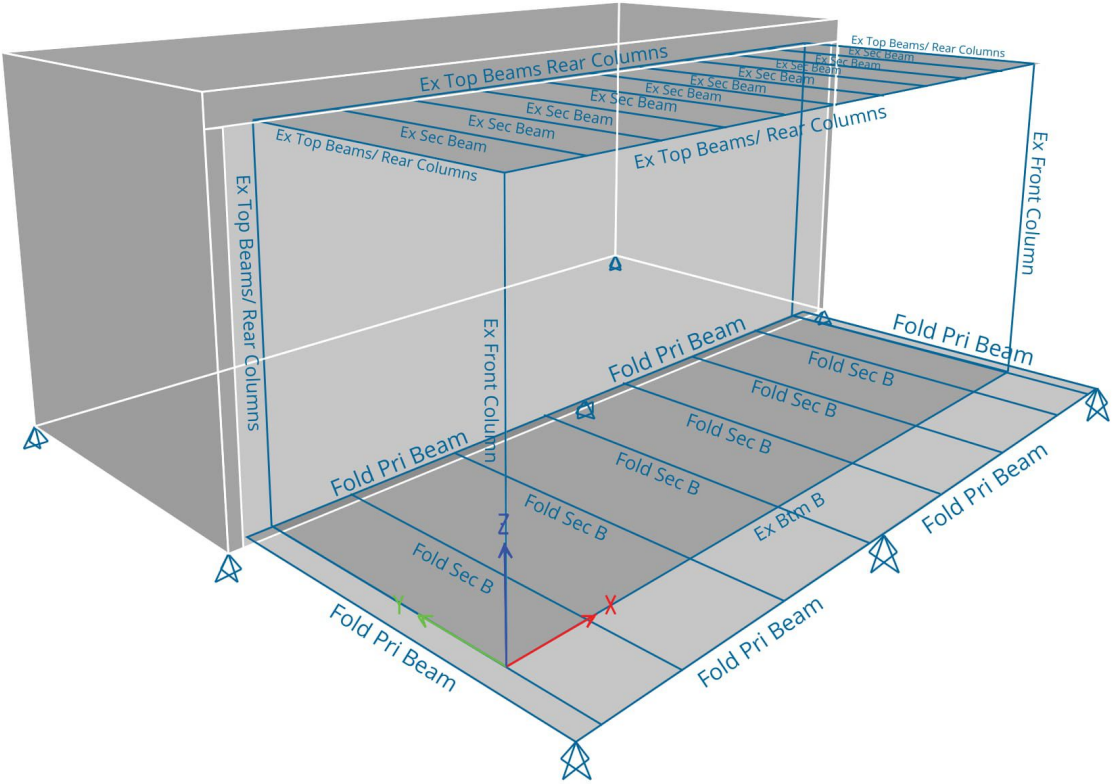
---

DESERT EDGE



## Technical Analysis

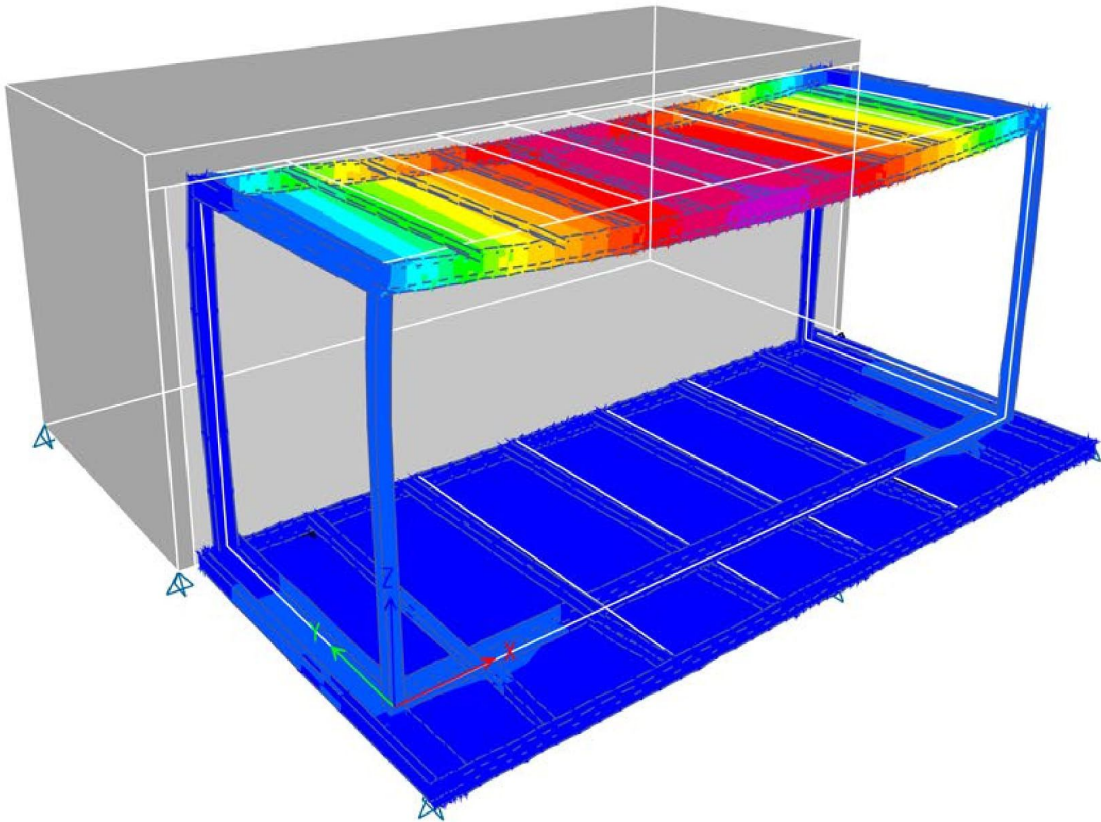




Demand/Capacity Ratio







Displacement in mm





Design

Bathroom

Utility Room

Bedroom

Entry  
Kitchen

Living

Entry



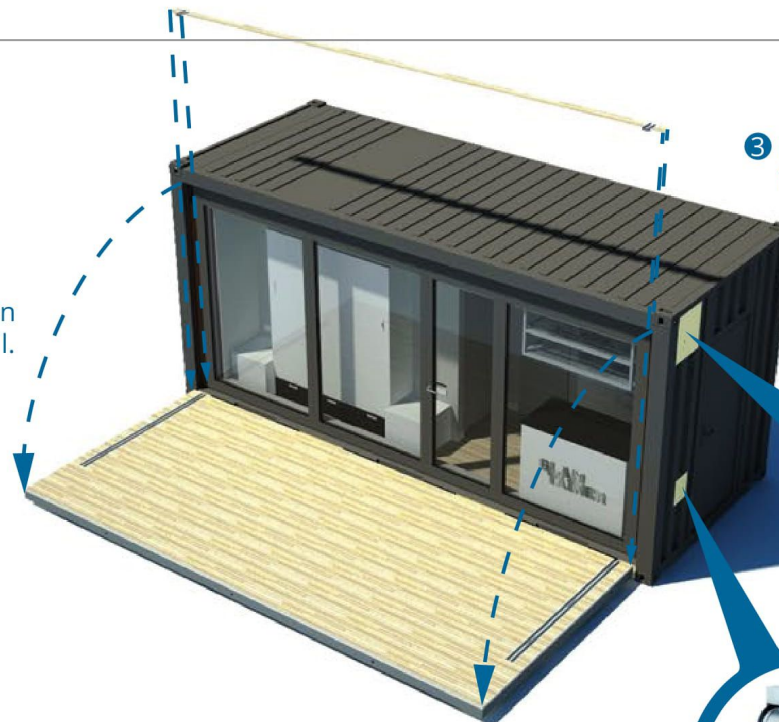




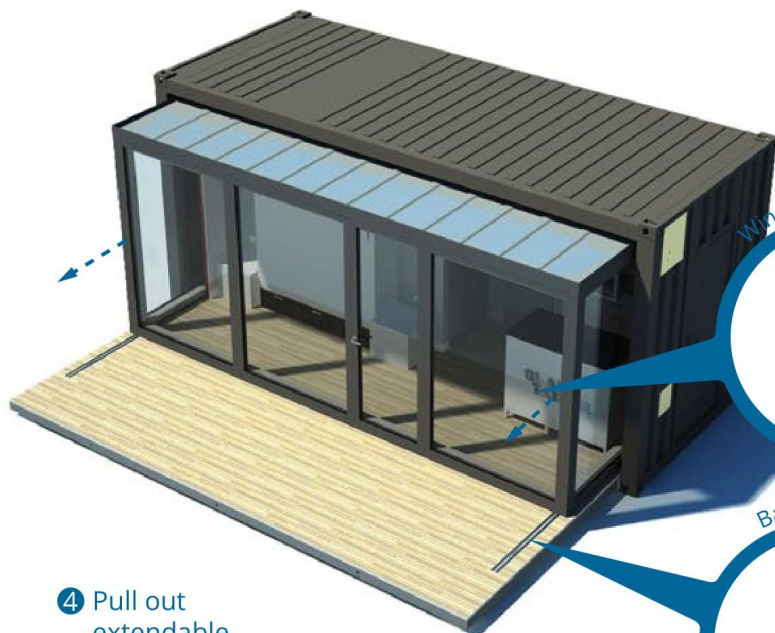
- 1 Deliver module onsite and level.



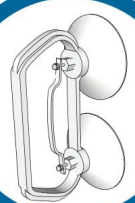
- 2 Let down side wall.



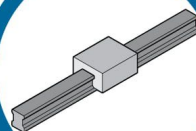
- 3 Fit in connecting floor piece.



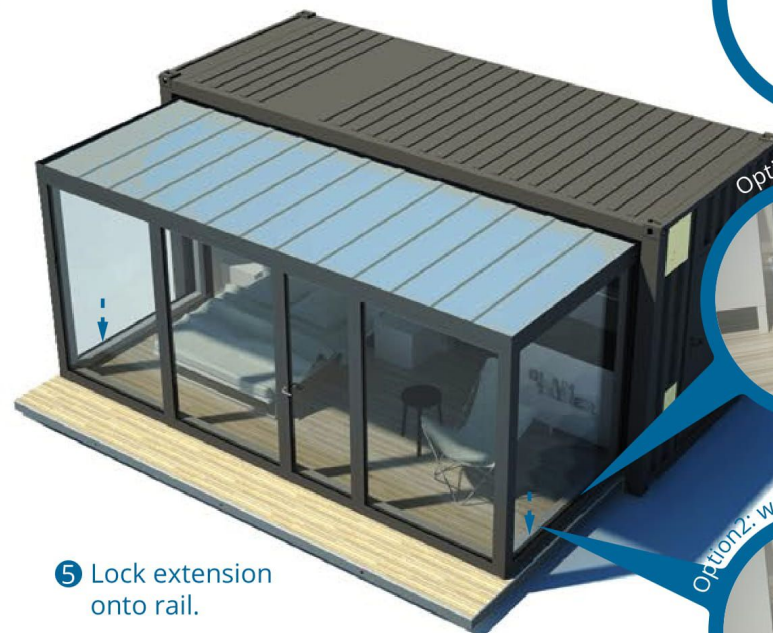
Window Vakuum Lift



Ball Rail System



- 4 Pull out extendable module.



- 5 Lock extension onto rail.

Option1: acrylic cover with LED feature

Option2: wooden cover with sockets

Substructure

Double glazing panel

Cover plate

Flooring on  
foldable side wall

## Push and pull on a cylindrical bar - one handed strength\*

				Push (N)			Pull (N)			
Age (years)	Sex	Orientation	No.	Mean	SD	Range	No.	Mean	SD	Range
21- 30	m	Vertical	6	225.01	90.08	73.23- 317.25	6	242.05	127.25	81.67- 421.53
		Horizontal		221.38	99.02	77.58- 339.03		231.81	107.92	110.33- 384.68
	f	Vertical	8	231.73	183.49	60.15- 609.20	8	224.99	154.07	102.14- 548.47
		Horizontal		223.56	183.01	55.80- 569.98		212.19	135.34	65.29- 429.72
31- 50	m	Vertical	10	457.12	171.77	190.88- 722.49	10	320.39	90.15	196.32- 495.24
		Horizontal		497.21	193.85	195.24- 879.36		347.83	96.22	212.70- 495.24
	f	Vertical	9	315.31	111.16	147.30- 482.83	9	225.90	41.44	163.56- 282.31
		Horizontal		328.38	137.59	129.87- 574.34		233.17	51.06	147.19- 298.69
51- 60	m	Vertical	4	270.40	53.77	208.31- 339.03	4	215.77	33.50	184.04- 261.84
		Horizontal		367.36	71.29	278.03- 443.61		261.84	26.54	233.17- 286.41
	f	Vertical	5	315.50	101.38	208.31- 426.18	5	229.08	89.24	134.90- 323.26
		Horizontal		272.80	97.99	177.81- 391.32		226.62	51.27	163.56- 278.22

## Required pulling force

	Rexroth	Other Systems (Claimed by Rexroth)
Rolling Frictional Coefficient	0.003	0.015
Pulling Force (N)	66.2175	331.0875

Track of  
Rexroth Ball- Rail- SystemSealing  
Panel



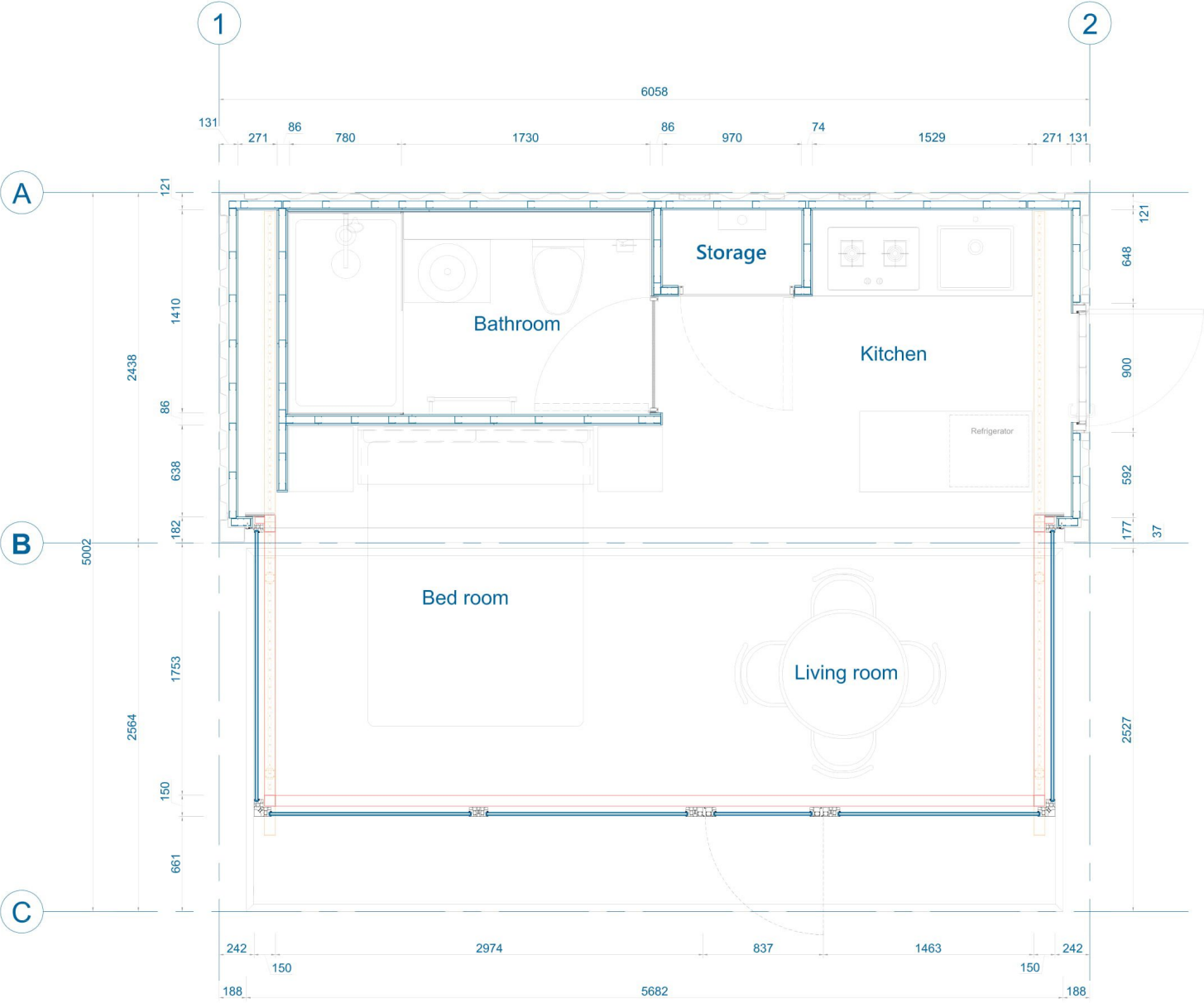


Technical Drawings



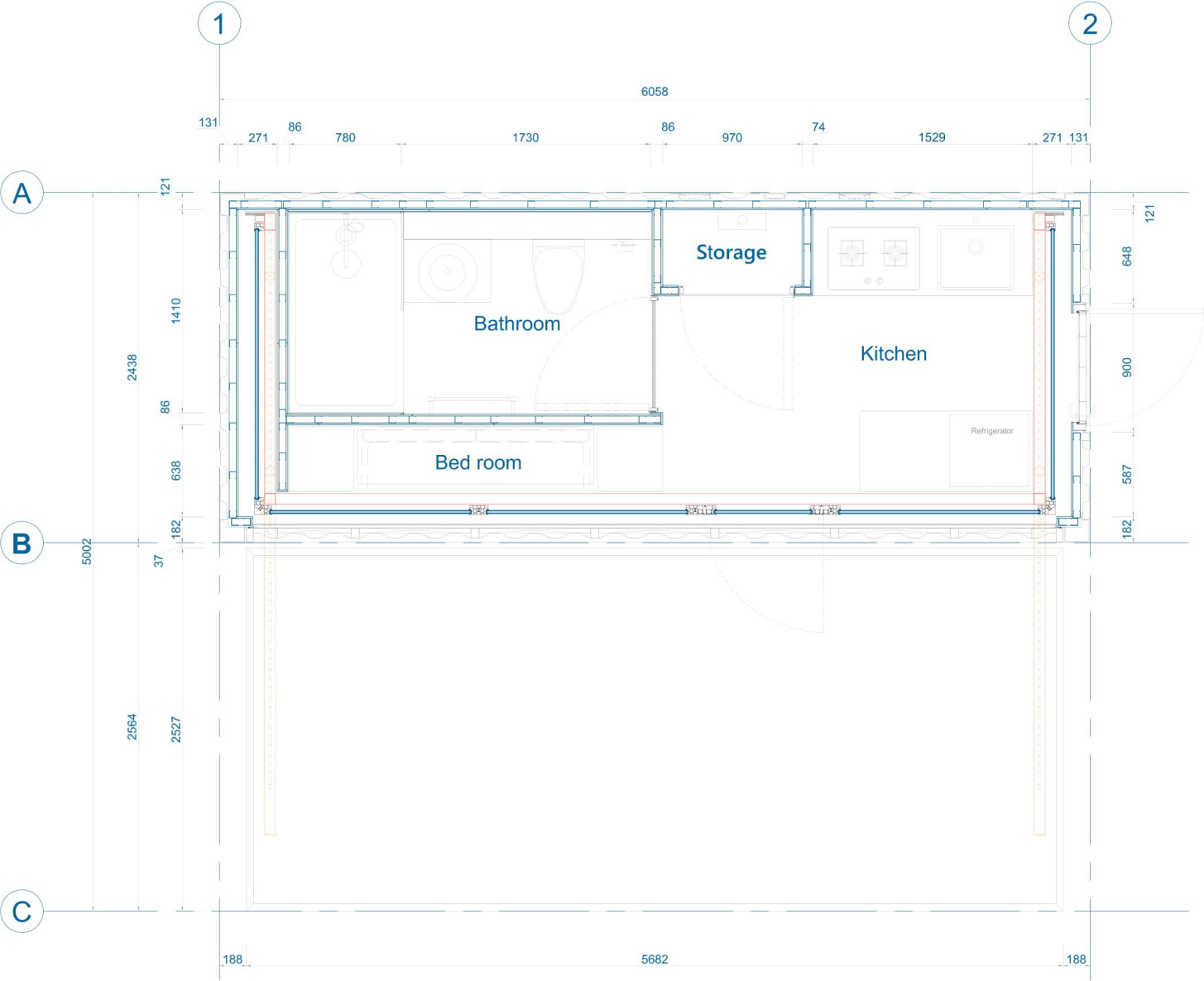
Doors and windows: RAL7016

Exterior wall finish: paint RAL 7016



SCALE  
1:30 @ A3  
0 300 600





SCALE  
1:30 @ A3  
0 300 600



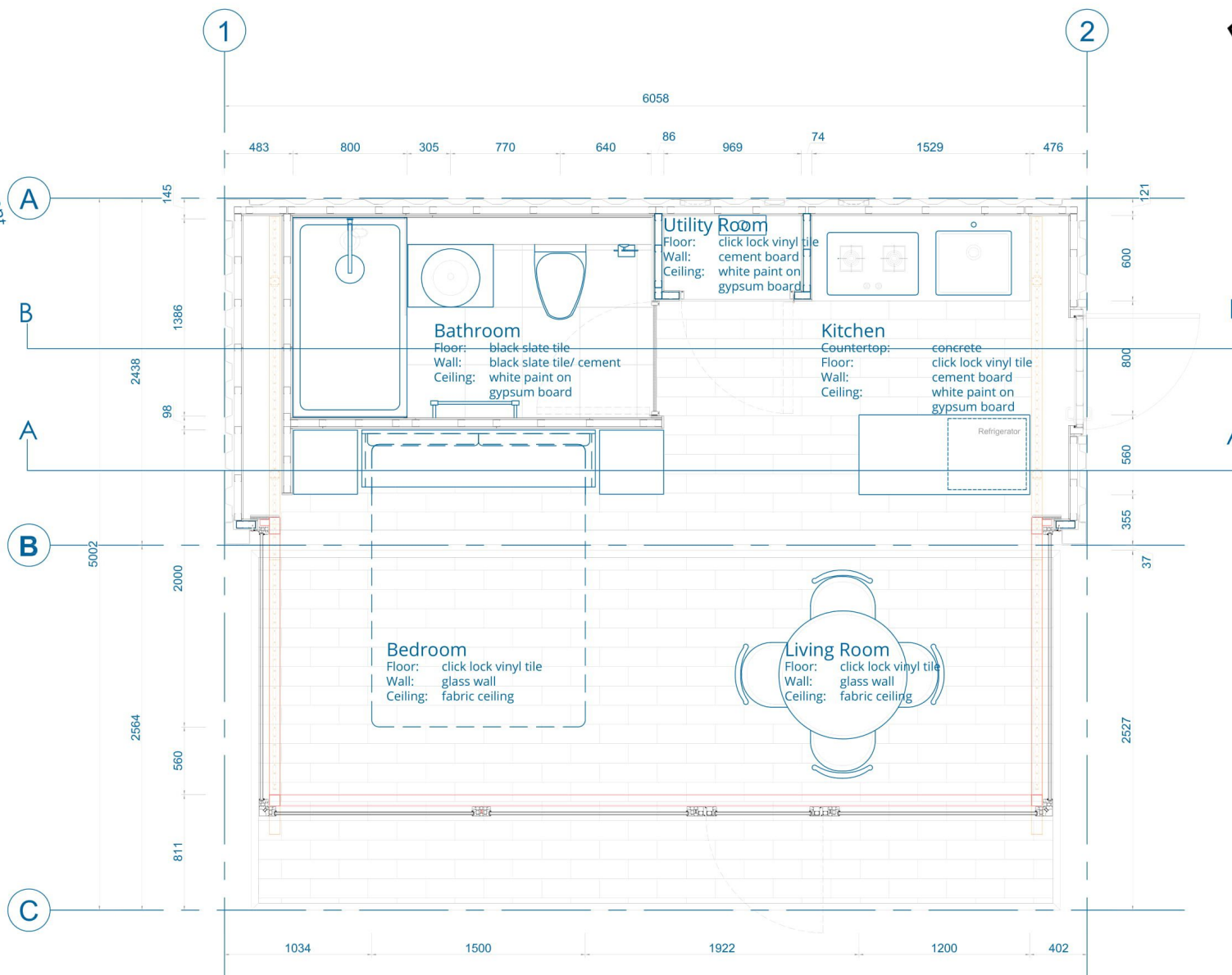




Ceiling: Emulsion paint

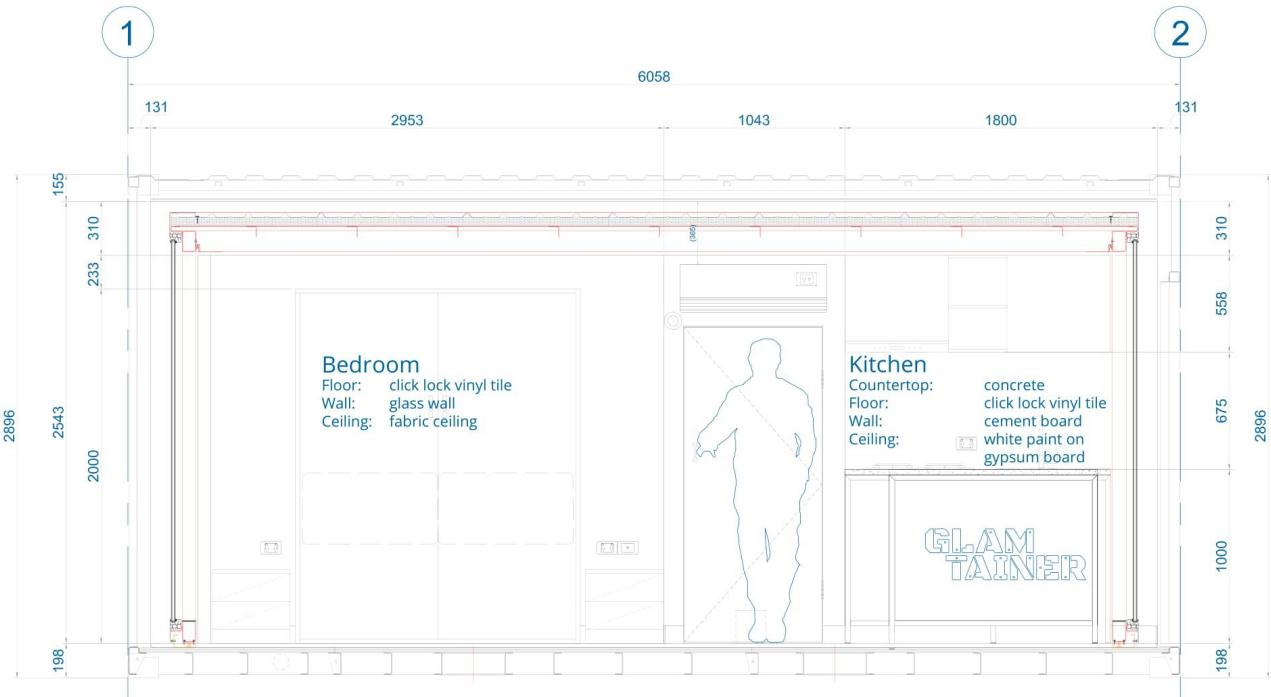
Bathroom finish: Black slate tile

Flooring: Vinyl tile



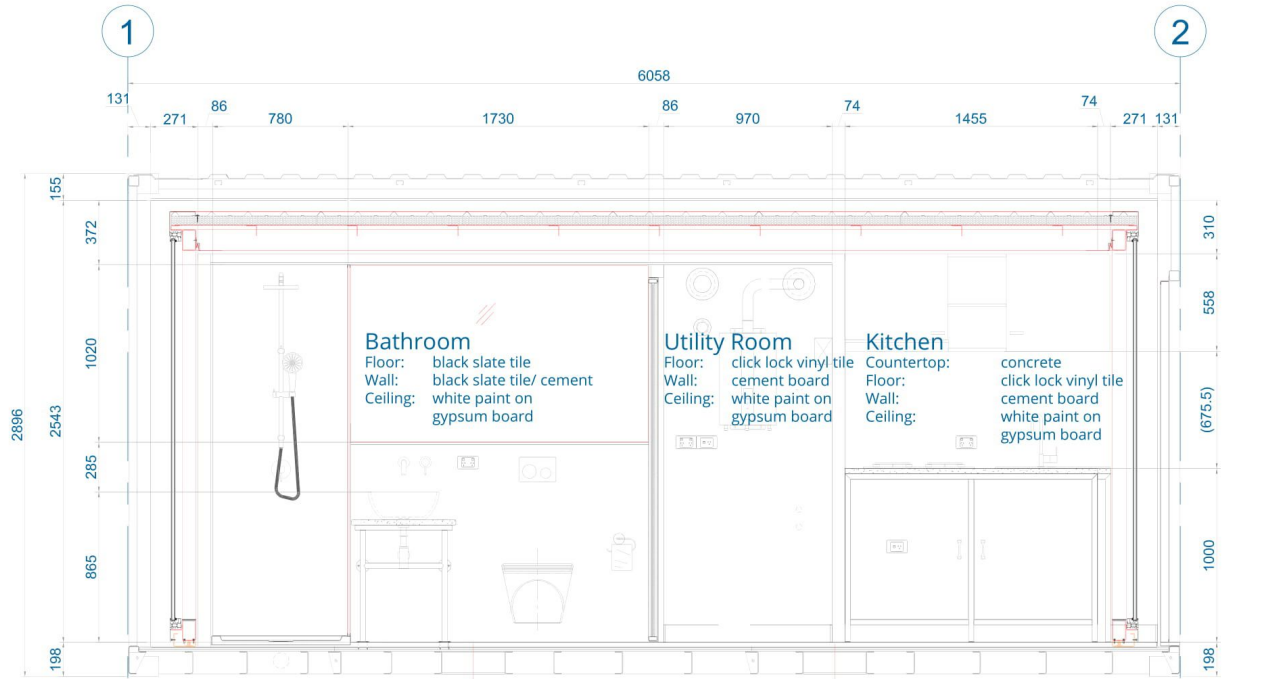
SCALE  
1:30 @ A3  
0 300 600

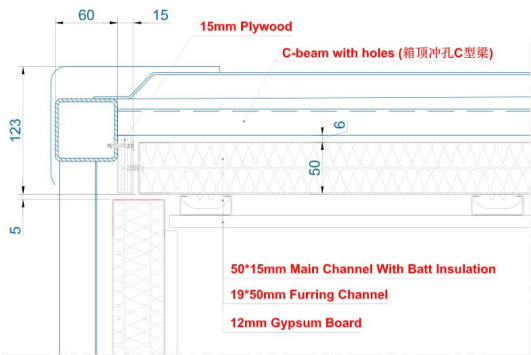




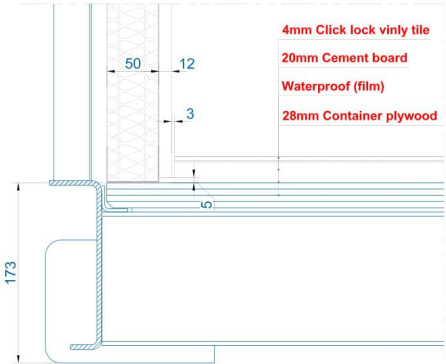
Section A

SCALE  
1:30 @ A3  
0 300 600

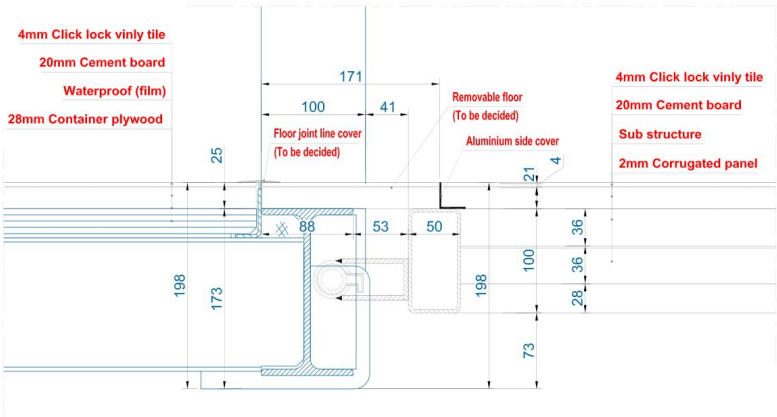




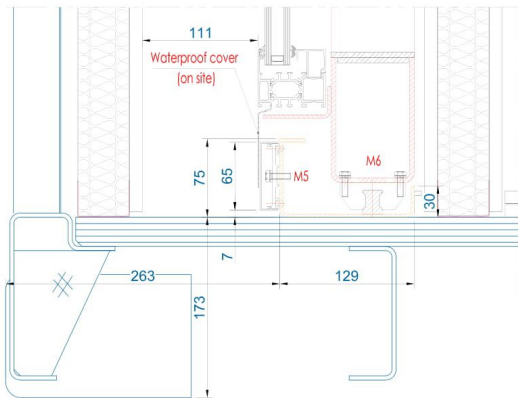
Detail - 01



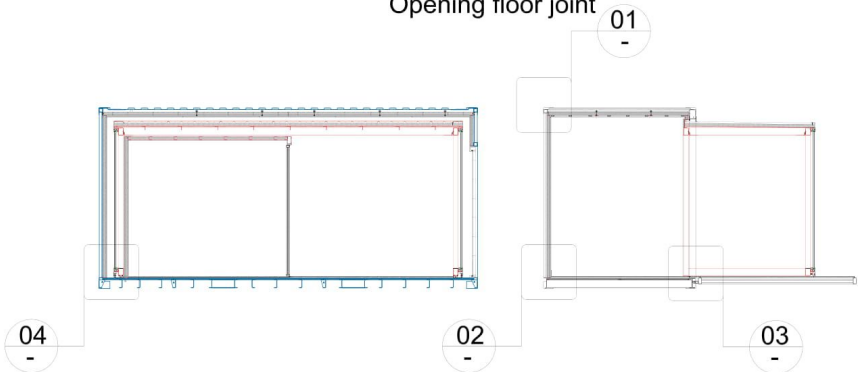
Detail - 02



Detail - 03  
Opening floor joint



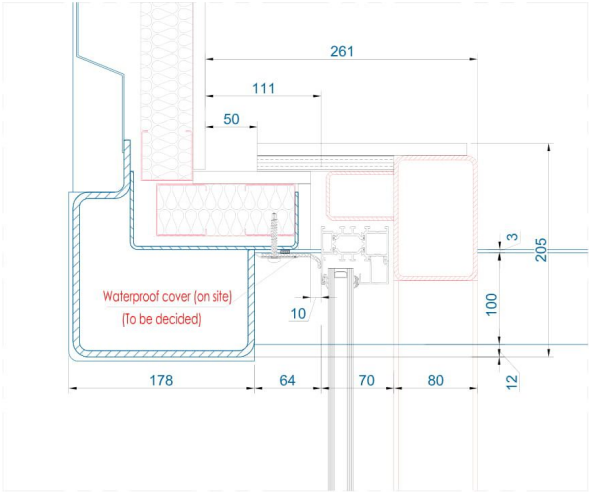
Detail - 04  
sliding track



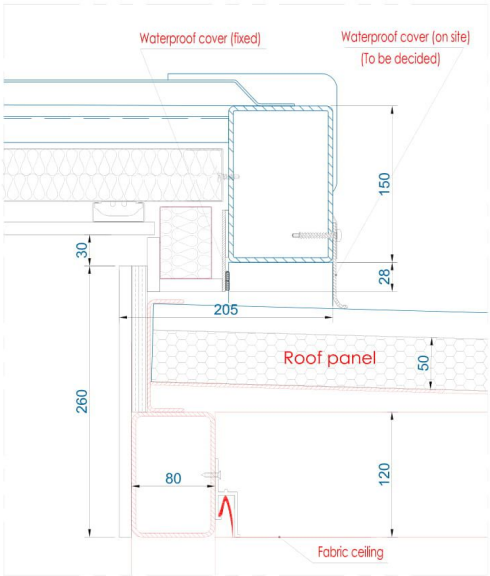
SCALE  
1:5 @ A3  
0 50 100

REVIEWED & APPROVAL STAMP

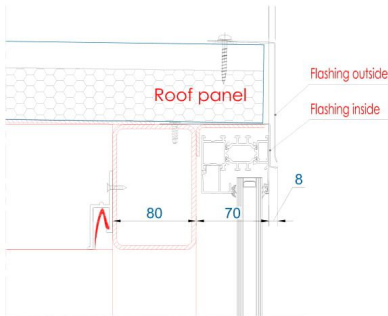




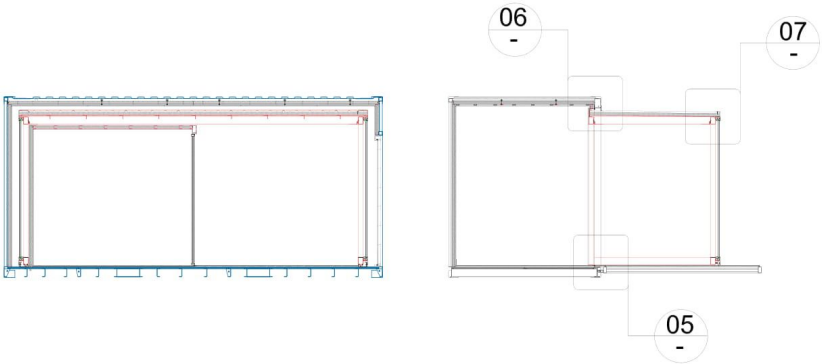
Detail - 05  
Opening side detail



Detail - 06  
Opening top detail

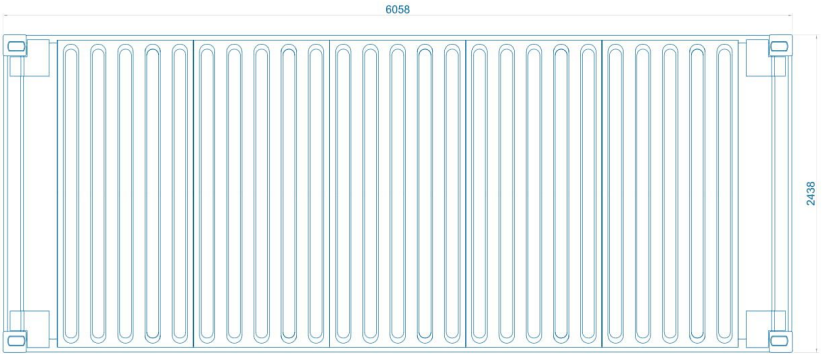


Detail - 07  
sliding flashing

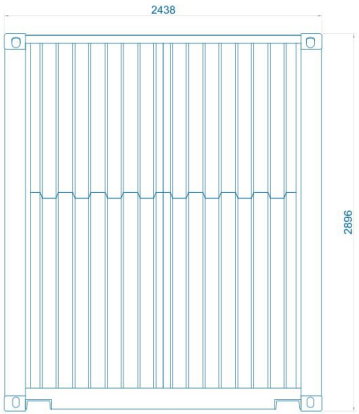


SCALE  
1:5 @ A3  
0 50 100

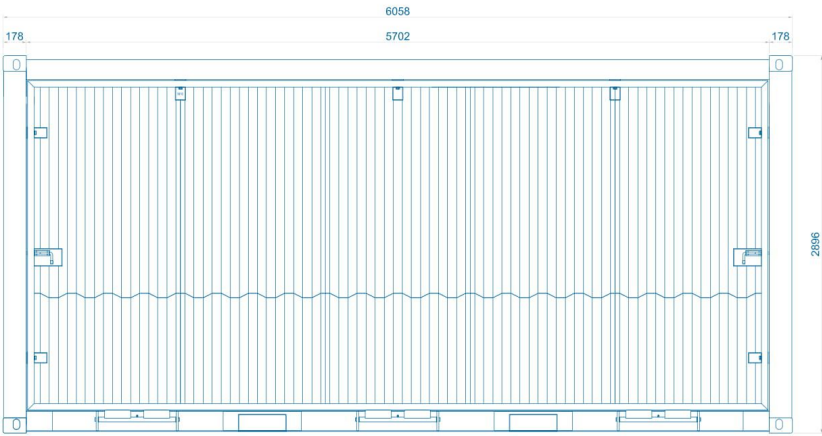
REVIEWED & APPROVAL STAMP



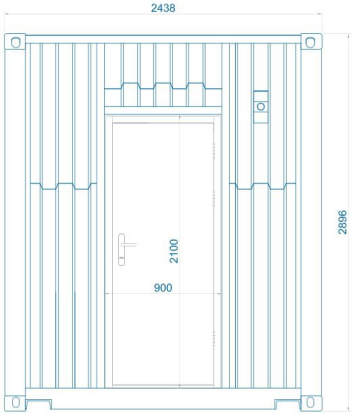
ROOF VIEW



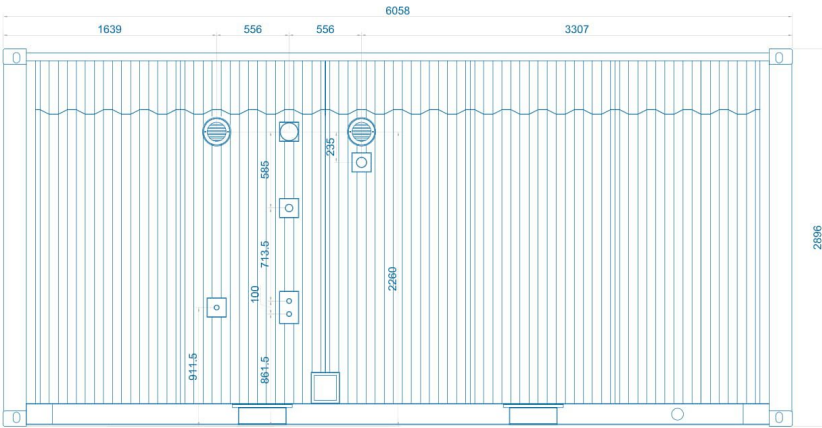
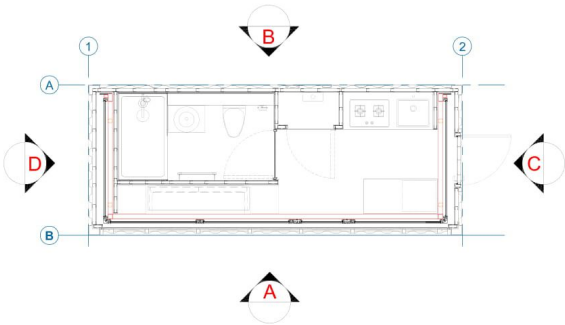
Elevation - D



Elevation - A

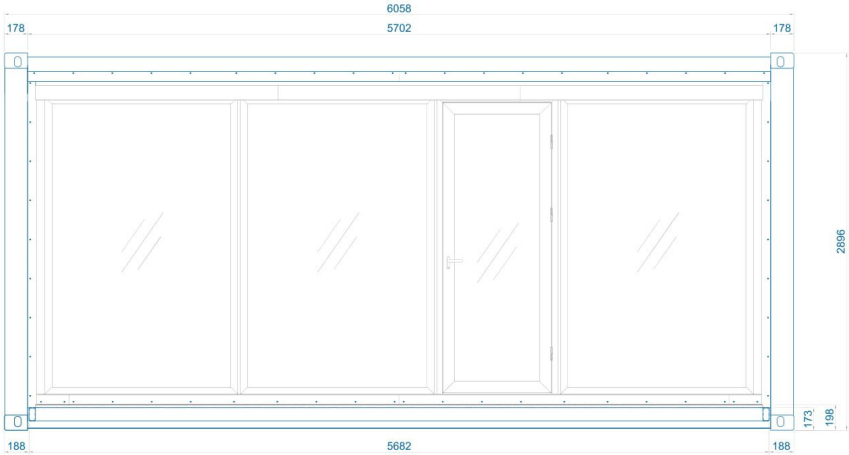


Elevation - C

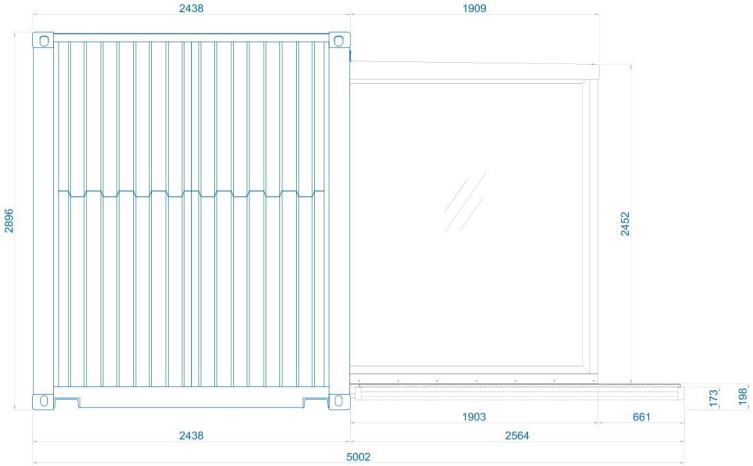


Elevation - B

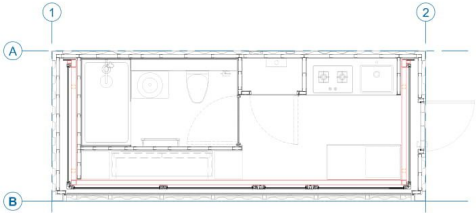
SCALE  
1:30 @ A3  
0 300 600



Elevation - Front  
Opening door

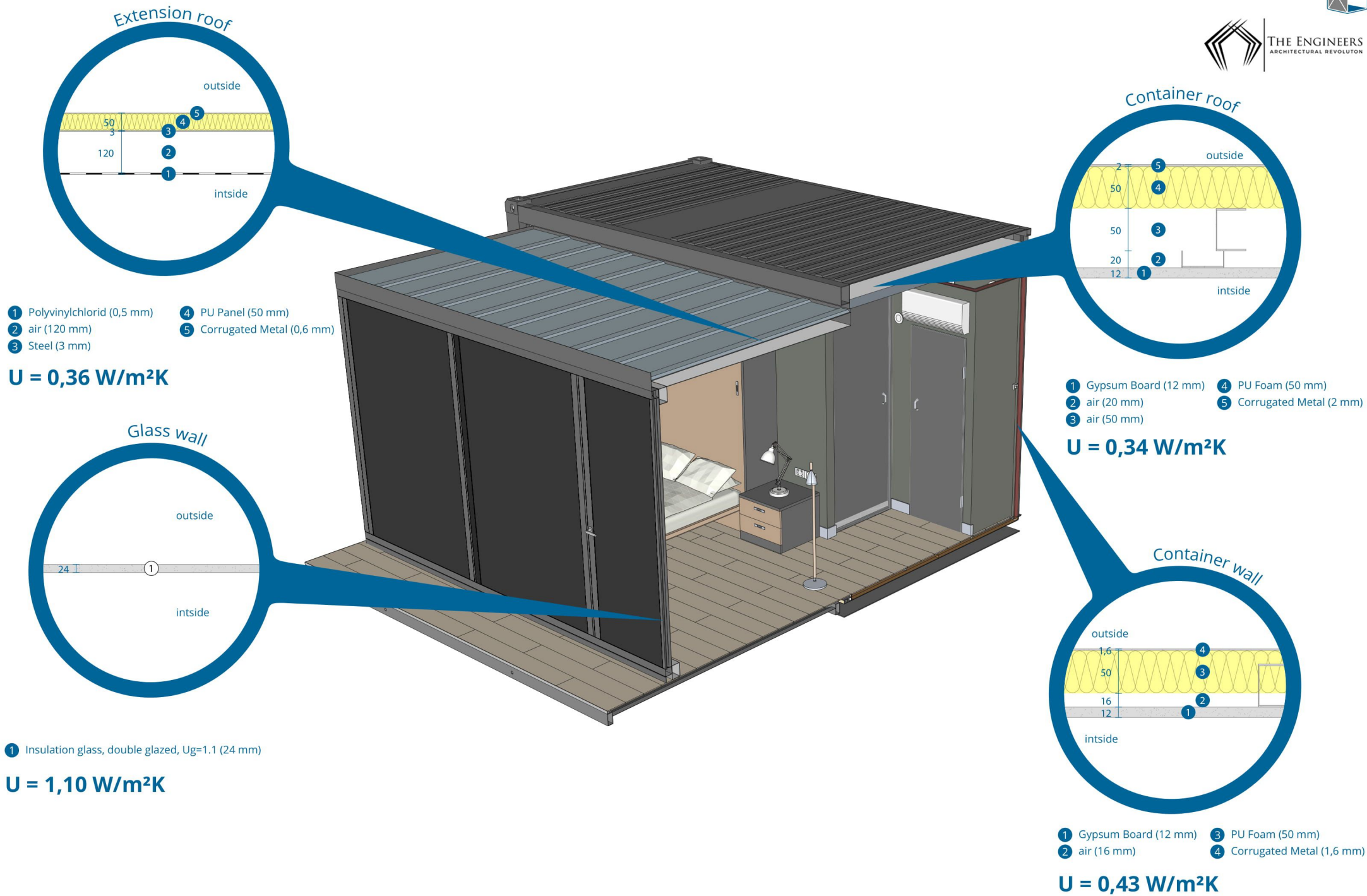


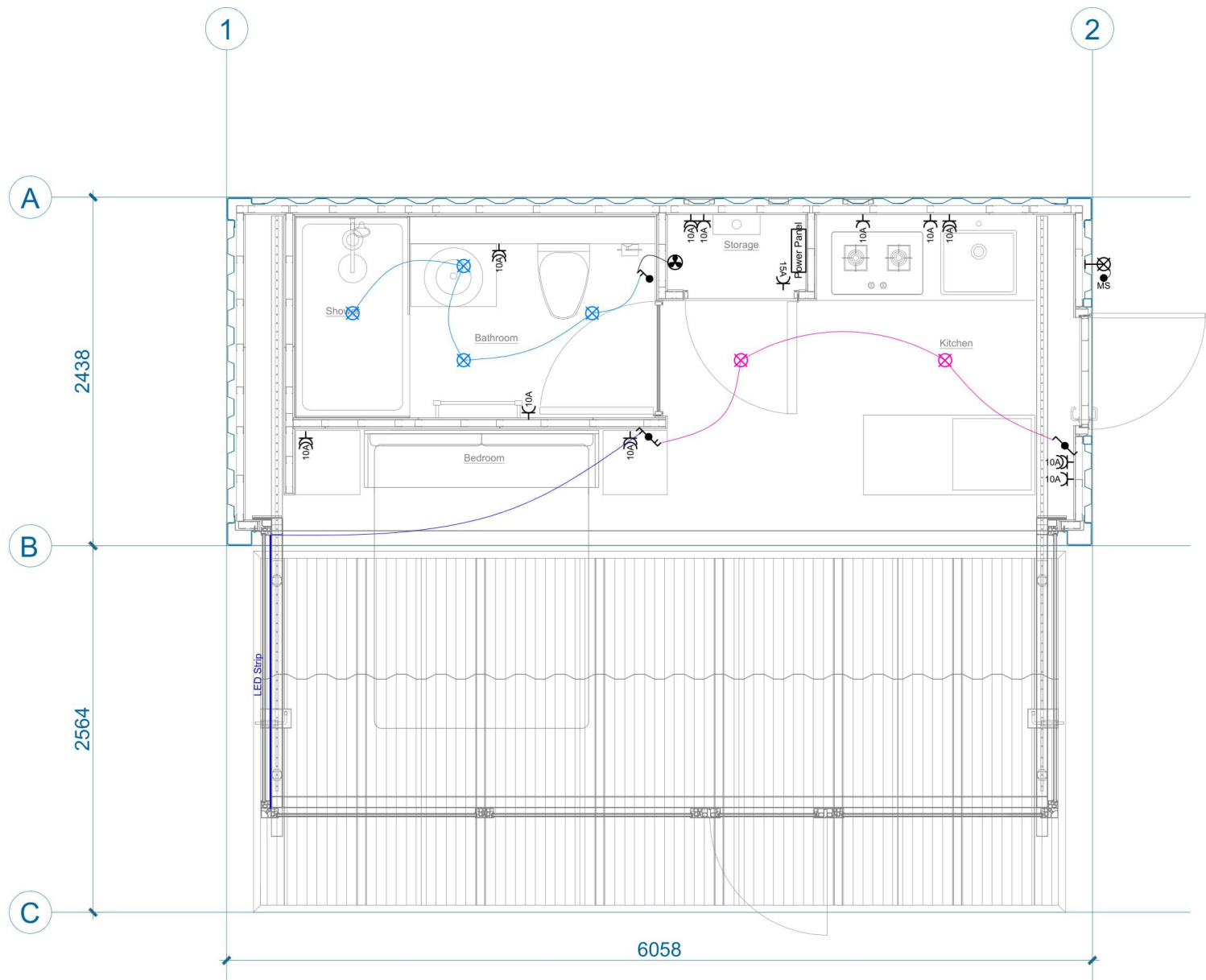
Elevation - Side  
Opening door



SCALE  
1:30 @ A3  
0 300 600







- Telecom Socket-Outlet
- Single Power Socket-Outlet
- Duplex Power Socket-Outlet
- Power Cable Outlet
- Light Fixture
- Electrical Box (Enclosure)
- Motion Sensor
- Fan

- 1-Gang 1-Way Switch
- 2-Gang 1-Way Switch
- 3-Gang 1-Way Switch
- 1-Gang 2-Way Switch
- 2-Gang 2-Way Switch
- 3-Gang 2-Way Switch
- 1-Gang 3-Way Switch
- 2-Gang 3-Way Switch
- 3-Gang 3-Way Switch

- 10A - 10 Amps Socket-Outlet
- 10A USB - 10 Amps Socket-Outlet with USB Charger
- 15A - 15 Amps Socket-Outlet
- TV - TV Cable
- T.B.D. - To Be Discussed
- WP - Waterproofed

SCALE  
1:30 @ A3  
0 300 600



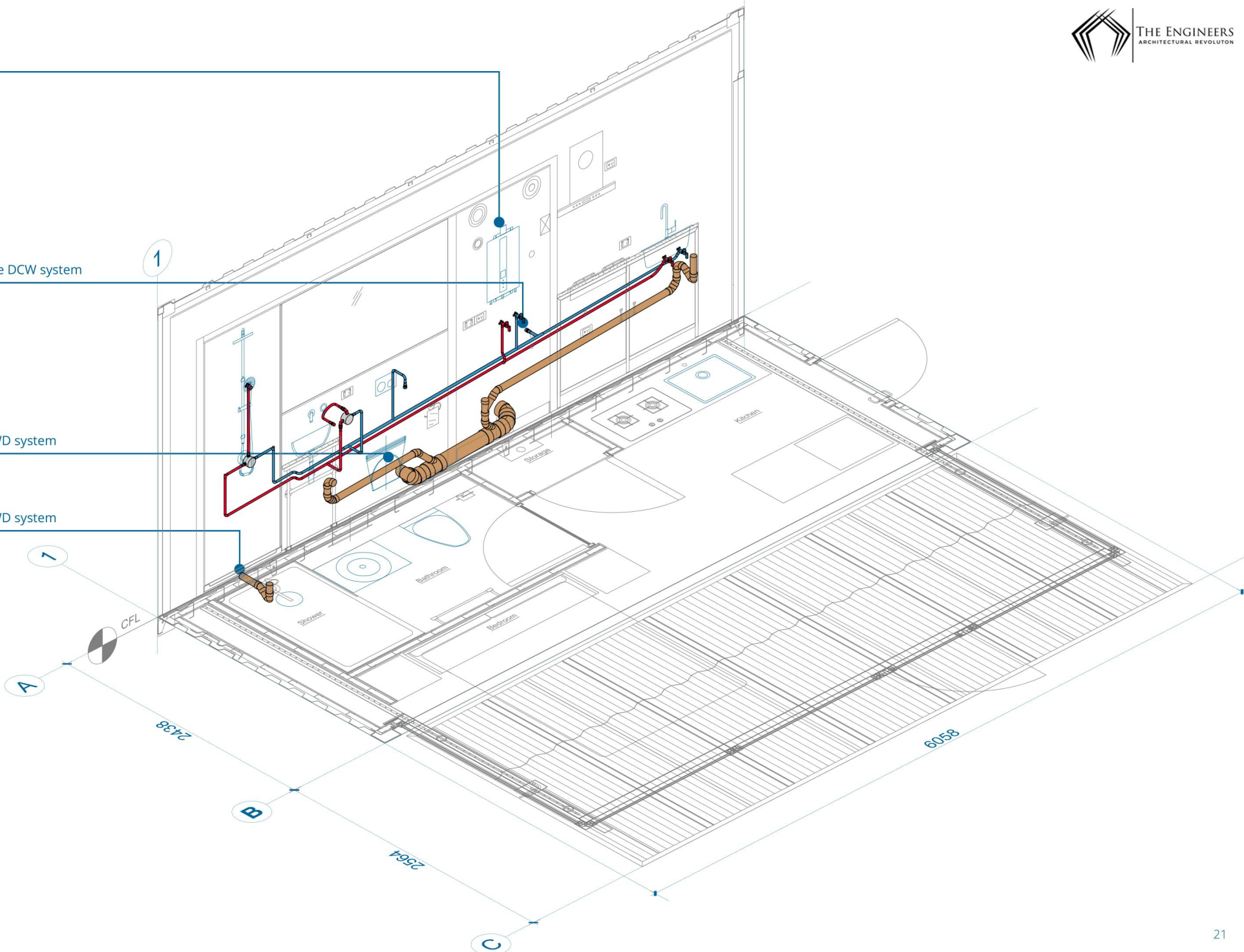


Water heater

Water supply connection to site DCW system

Drainage connection to site SWD system

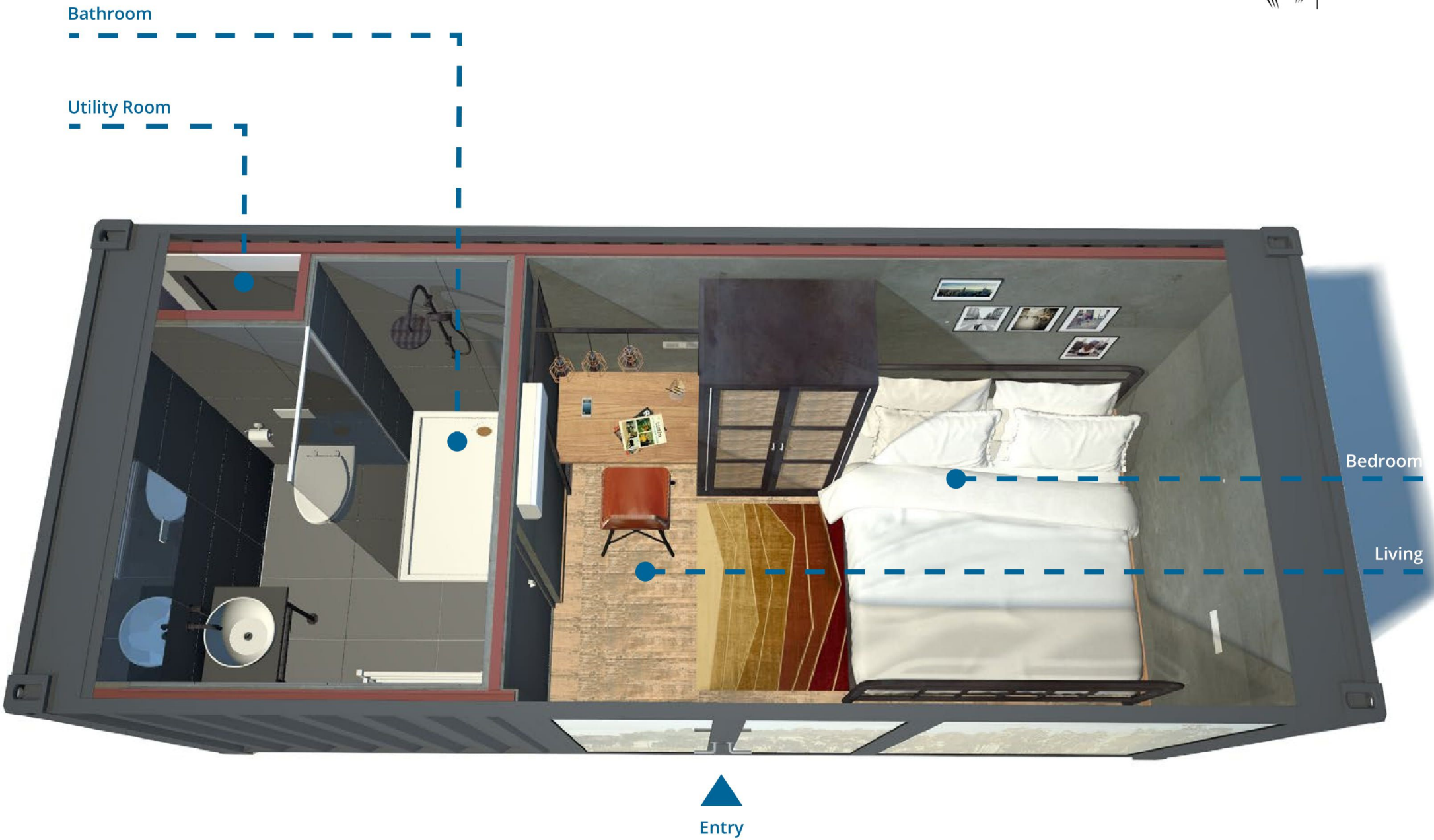
Drainage connection to site SWD system

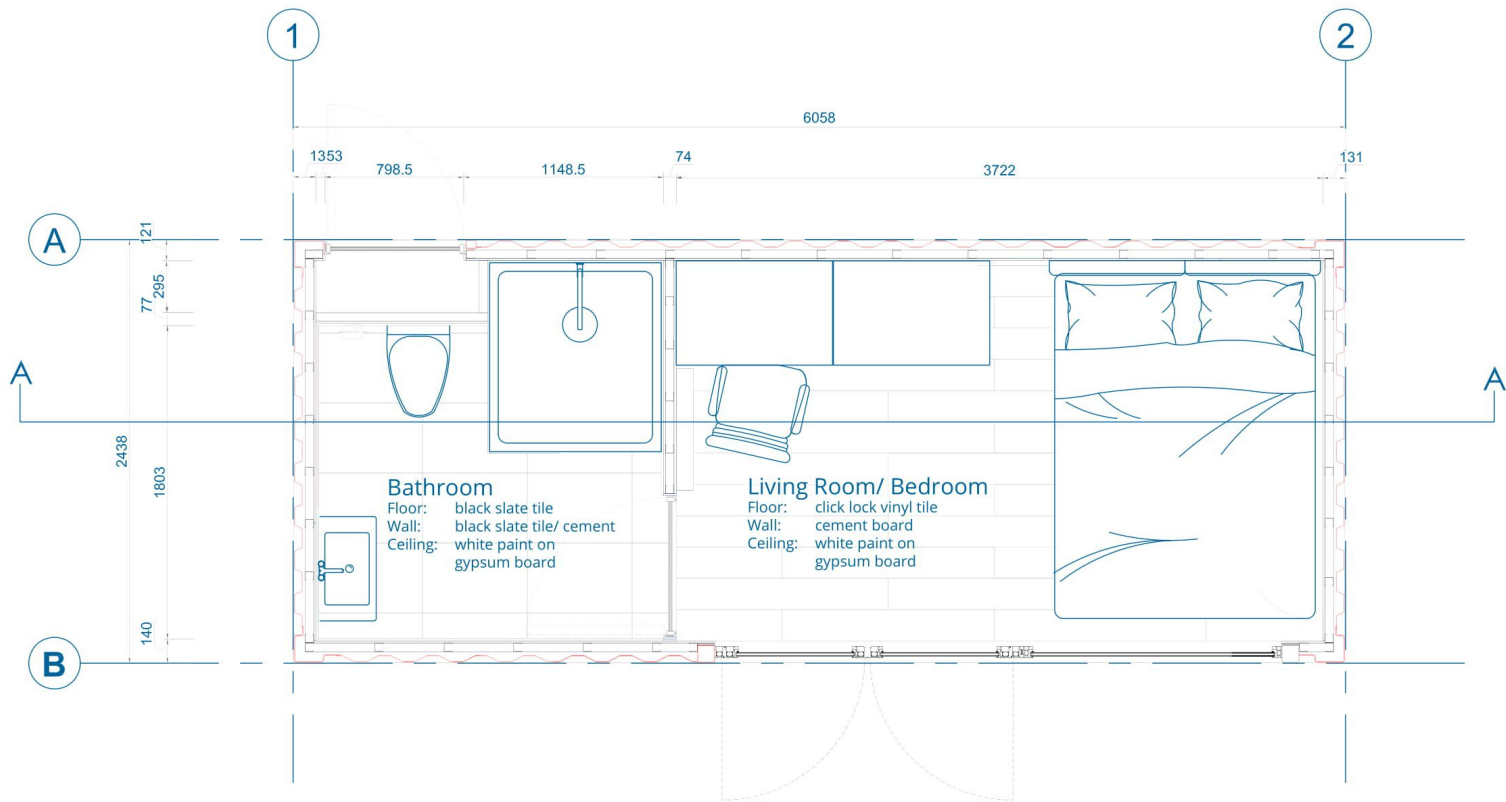
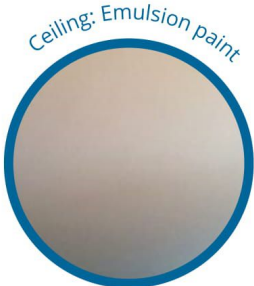




**Weight**

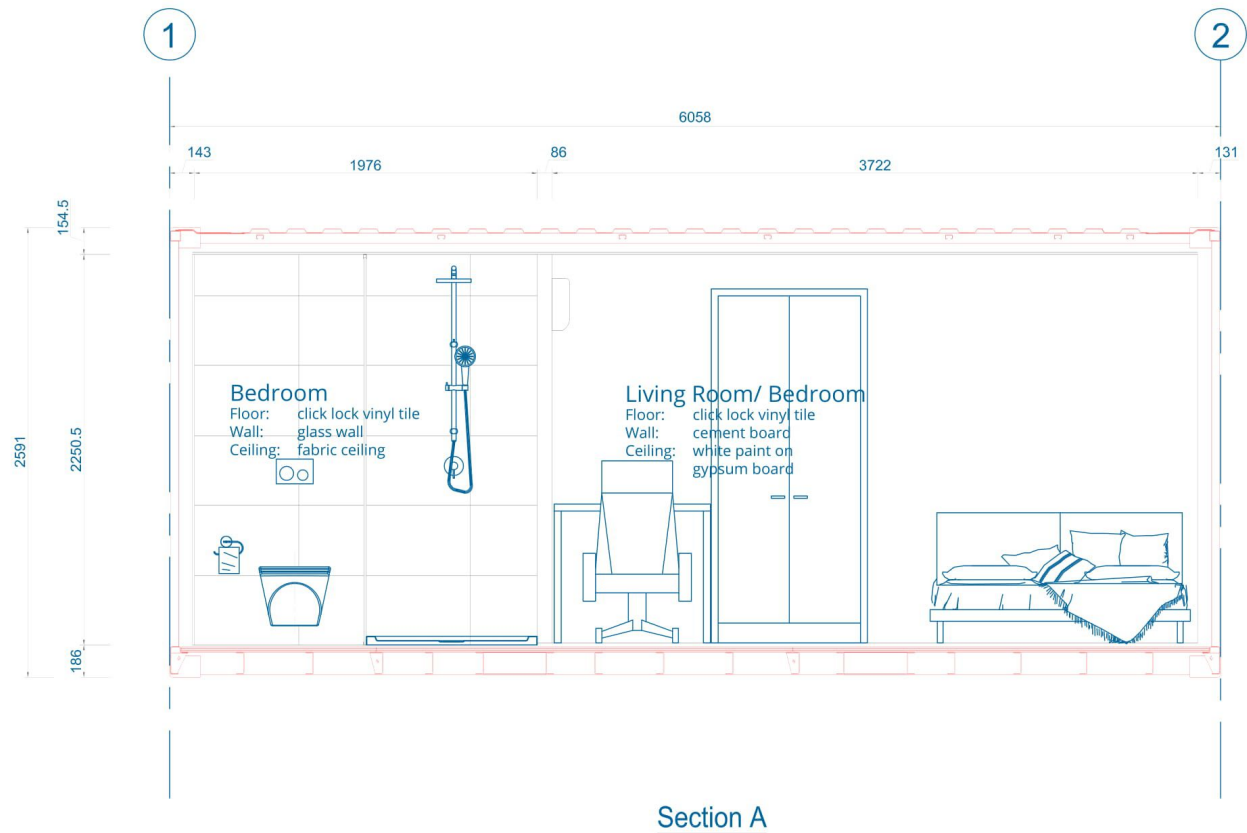
<b>Module including foldable side wall</b>	<b>6.7T</b>
<b>Extension</b>	<b>2.2T</b>
<b>Total</b>	<b>8.9T</b>





SCALE  
1:30 @ A3  
0 300 600





SCALE  
1:30 @ A3  
0 300 600





- Telecom Socket-Outlet
- Single Power Socket-Outlet
- Duplex Power Socket-Outlet
- Power Cable Outlet
- Light Fixture
- Electrical Box (Enclosure)
- Motion Sensor
- Fan

- 1-Gang 1-Way Switch
- 2-Gang 1-Way Switch
- 3-Gang 1-Way Switch
- 1-Gang 2-Way Switch
- 2-Gang 2-Way Switch
- 3-Gang 2-Way Switch
- 1-Gang 3-Way Switch
- 2-Gang 3-Way Switch

- 10A - 10 Amps Socket-Outlet
- 10A USB - 10 Amps Socket-Outlet with USB Charger
- 15A - 15 Amps Socket-Outlet
- TV - TV Cable
- T.B.D. - To Be Discussed
- WP - Waterproofed

SCALE  
1:30 @ A3  
0 300 600





## The Engineers Co.

8252 Prince Sultan Street, Alhumaidhi plaza  
M floor, 23423 Jeddah  
Saudi Arabia

T +966547666917  
Info@theengineers-co.com  
www.theengineers-co.com



## شركة المهندسون للمقاولات العامة

شارع الأمير سلطان الحمصي، بلازا 8252  
الدور M , جدة 2343  
المملكة العربية السعودية

T +966547666917  
www.theengineers-co.com

\* Prices are subject to change. Prices include installation and final finishing of the suites.

Prices do NOT include any applicable local taxes. Prices do NOT include on-site delivery. Prices do NOT include any local permit application fees, any site/grade work, underground work, utility work, foundation/structural work or garage/car port that may be required for preparation of DESERTBOX installation.

All images of DESERTBOX are artist illustrations. Final installed product may appear different than illustrations.

All DESERTBOX designs, plans, drawings and illustrations are copyright © 2016

\*. الأسعار قليلة للتغيير وشاملة التركيب والتشطيبات النهائية للوحدات السكنية. الأسعار غير شاملة قيمة الضريبة المضافة والتوصيل وتكاليف استخراج تصاريح البناء والأساسات

\* الصور للتوضيح فقط، النتائج النهائية للمنتج في الواقع من الممكن أن تظهر بشكل مختلف عن الصور

\*جميع الحقوق محفوظة لشركة المهندسون للمقاولات العامة

